

In this case there is a large difference between the magnitude of the clinical (manifest) astigmatism and the corneal Contoura measured astigmatism.

Phorcides Analytic Engine - 1.9.4

File Tools Help nseye2

1. Open Image

JPEG screenshot of Contoura Topographic Only Treatment

	Sphere	Cylinder	Axis
Clinical	-4.00 D	-0.25 D	10 °
Measured	-0.21 D	-1.18 D	177 °
Modified*	0.00 D	0.00 D	0 °

Zero out Modified Sphere and Cylinder

SP3 Open Image

2. Enter Patient Data

Patient ID *ID Number* 4/ 1/1985 SAVANNAH DOLEZAL

Eye Right (OD) Left (OS)

	Sphere	Minus Cylinder	Axis
Manifest Refraction "Clinical"	-4.00 D	-0.25 D	10 °
Contoura Recommended Treatment "Measured"		-1.18 D	177 °
Topographer Anterior Corneal Negative Cylinder (Flat Axis)		-1.04 D	176 °
Topographer Posterior Corneal Negative Cylinder (Steep Axis)		-0.26 D	84 °

Tissue Ablation max: 13.20µm cen: 6.40µm

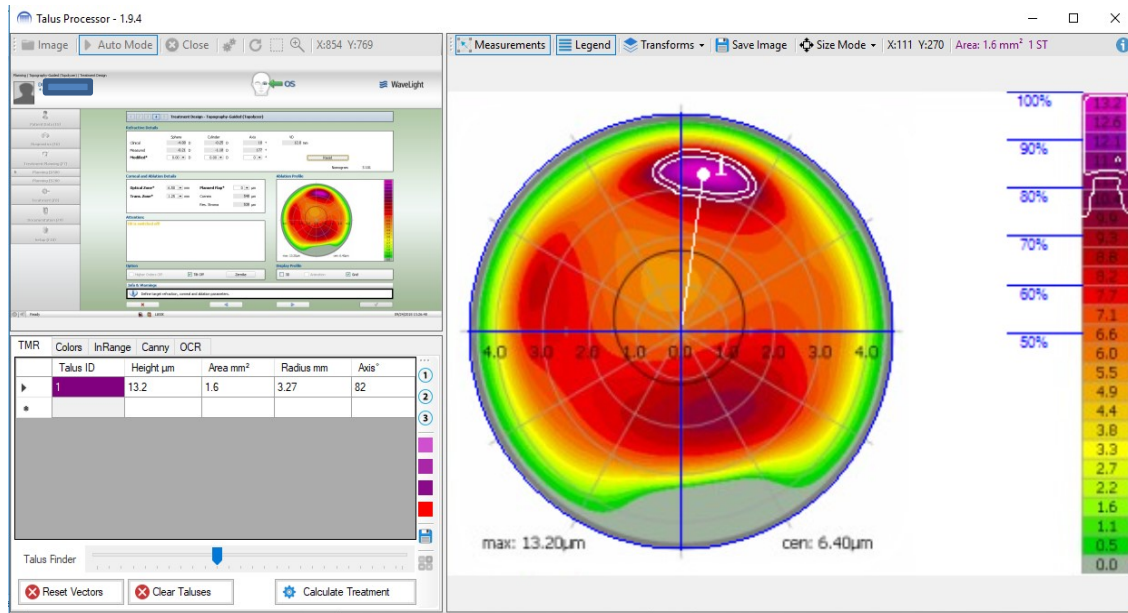
max 13.20 µm cen 6.40 µm

3. Calculate Treatment

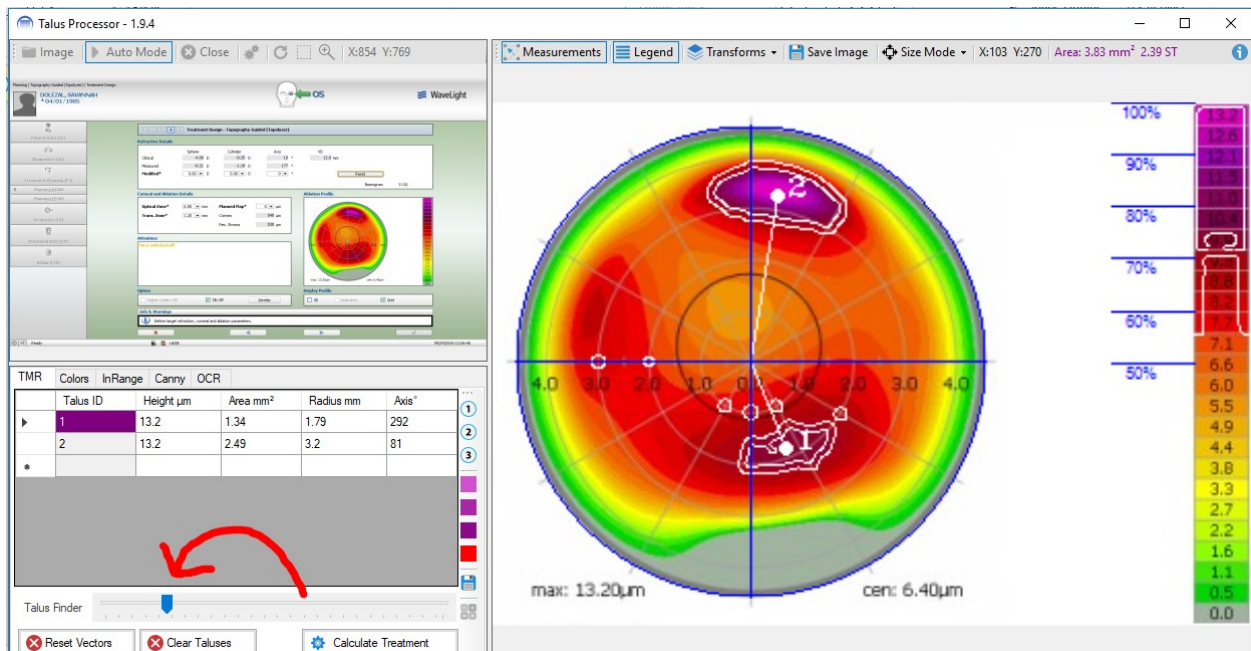
PHORCIDES ANALYTIC ENGINE Recommended Treatment

Sphere Minus Cylinder Axis Processor

We can see on the talus calculator that Phorcides has automatically picked up the talus at the 82 degree axis. However, there is another talus present that we want to capture. This is especially important in this case since the maximum height of each talus, seen at light purple, is significant at 13.20 microns. Typical talus in most patients are 8 microns or less. Since this cornea has areas of elevation above 10 microns we want to be sure we capture each talus.



Go to the "Talus Finder" in the lower left corner and move it with your mouse until Phorcides picks up the second talus. Then hit the "Calculate Treatment" button at the bottom.



The total corneal astigmatism vector, combining both anterior and posterior corneal astigmatism, is represented by the green arrow. Since the patient was asking for much less astigmatic correction at the phoropter in the clinic, you would expect to see an astigmatic vector about 90 degrees away from the corneal vector and about the same size. Sure enough, you do. The purple vector represents the astigmatism contribution from the taluses. Since Contoura is going to eliminate the taluses and this counterbalance will be gone, you should treat most of the corneal astigmatism. Hence, Phorcides is recommending -0.93 be treated.

Recommended Treatment ✕

Patient

ID: DOB: Name: Save

Refractive Details

	Sphere	Cylinder	Axis
Clinical	-4.00 D	-0.25 D	10 °
Measured	-0.21 D	-1.18 D	177 °
Recommended	-3.81 D	-0.93 D	178 °

Eye ✎

Right (OD)

Left (OS)

Ophthalmic Vectors

Legend:

- corneal astigmatism
- talus astigmatism
- internal astigmatism
- final treatment vector

Extra vectors

manifest astigmatism