

In this case, the magnitude of the clinical (manifest) astigmatism is nearly equal to the Contoura measured anterior astigmatism. However, the axis difference between the two is very large at 66 degrees difference.

Phorides Analytic Engine - 1.9.4

File Tools Help nseye2

1. Open Image

JPEG screenshot of Contoura Topographic Only Treatment

	Sphere	Cylinder	Axis
Clinical	-4.00 D	-0.75 D	90 °
Measured	-0.36 D	-0.73 D	156 °
Modified*	0.00 D	0.00 D	0 °

Zero out Modified Sphere and Cylinder

SP3 Open Image

2. Enter Patient Data

Patient ID *ID Number* 10/ 6/1976 DAWN WES

Eye Right (OD) Left (OS)

	Sphere	Minus Cylinder	Axis
Manifest Refraction "Clinical"	-4.00 D	-0.75 D	90 °
Contoura Recommended Treatment "Measured"		-0.73 D	156 °
Topographer Anterior Corneal Negative Cylinder (Flat Axis)		-0.70 D	166 °
Topographer Posterior Corneal Negative Cylinder (Steep Axis)		-0.10 D	54 °

Tissue Ablation max: 16.31µm cen: 6.96µm

max 16.31 µm cen 6.96 µm

3. Calculate Treatment

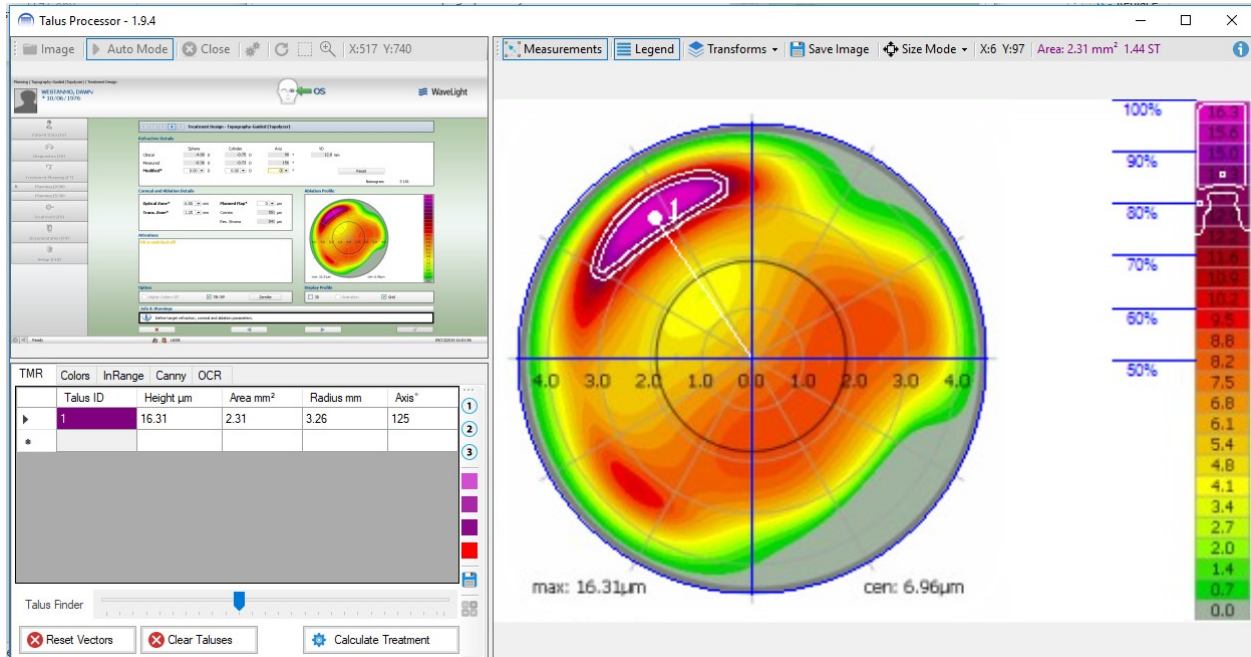
PHORCIDES ANALYTIC ENGINE Recommended Treatment

-4.42 -0.2 157 Processor

Online SP3_1366x768.xml DAWN WESTANMO OS.jpg Version: 1.9.4

Hitting the "Processor" button in the lower-right corner brings us to the talus calculator.

In this eye there is a single standard-sized talus at 125 degrees. The Phorcides auto-select software has correctly identified the talus on its own. We hit the “Calculate Treatment” button in the lower-left section of the screen and move on.



We are now at the final calculation page. Selecting the button in the lower left-hand corner displays the yellow manifest refractive vector. Visually you can see why the manifest vector is at axis 90 degrees. While the green corneal astigmatism vector and the talus vector are between 130 and 156 degrees, there is a significant internal astigmatism component at around 65 degrees. This internal astigmatism “pulls” the manifest refractive astigmatism away from the corneal astigmatism. You will also notice that since this astigmatism is internal and will remain after LASIK, Phorcides has reduced the amount of anterior corneal astigmatism to compensate for it. This is why Phorcides is recommending 0.2 diopters of astigmatic treatment; less than either the manifest or the corneal astigmatism.

