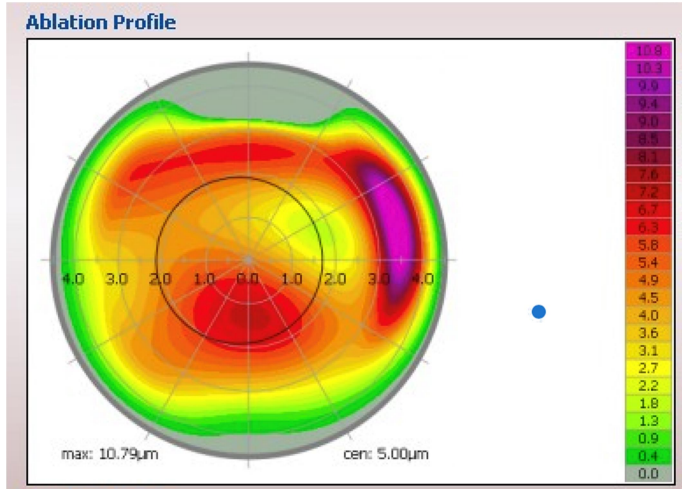
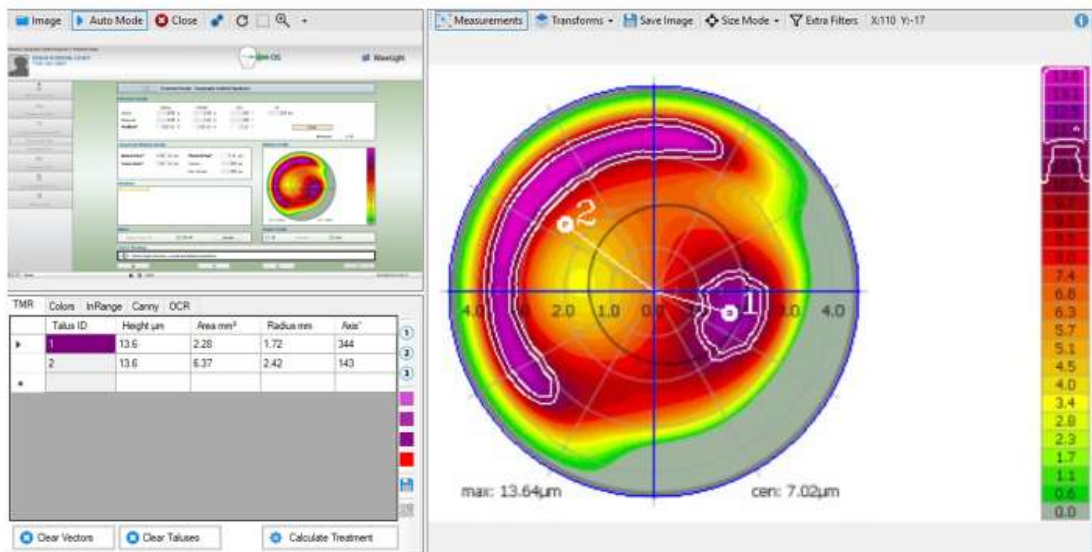


Sometimes a patient has a talus that is longer than a standard talus. In these cases, Phorcides allows you to modify how a talus is evaluated.

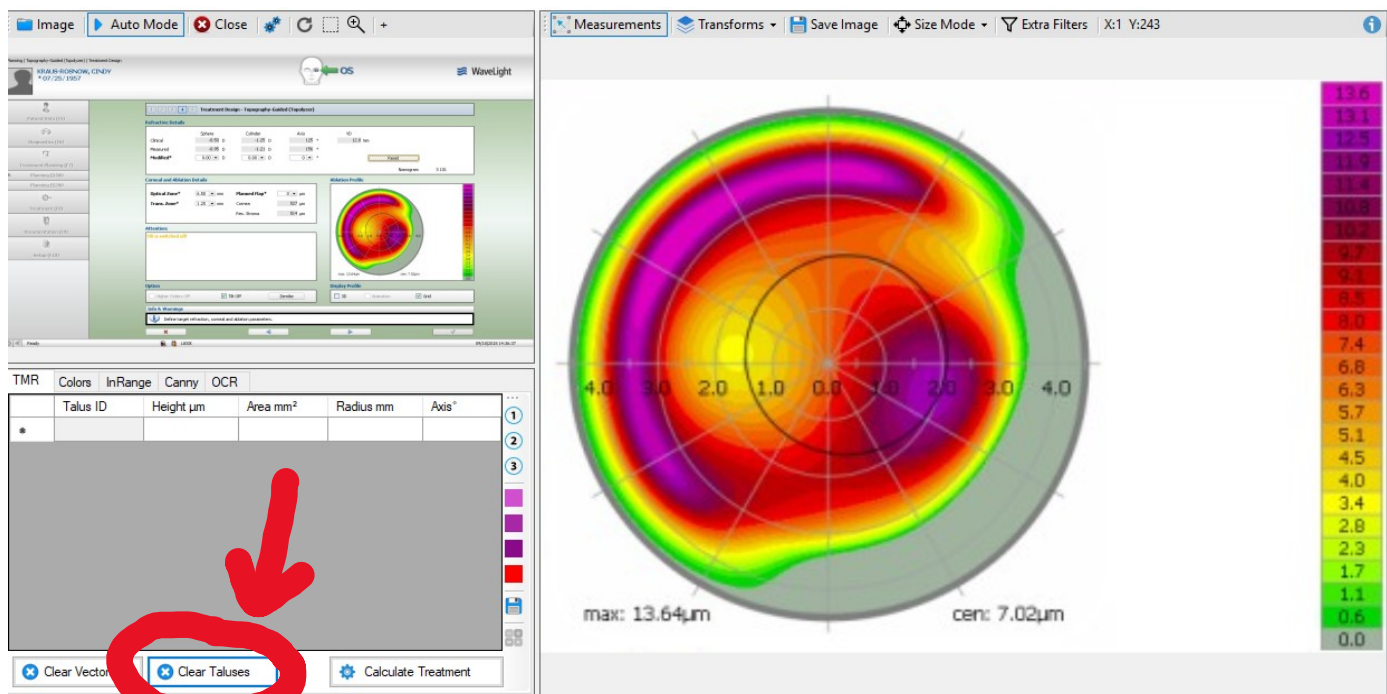
Here is what one might consider a “standard” size and area talus.



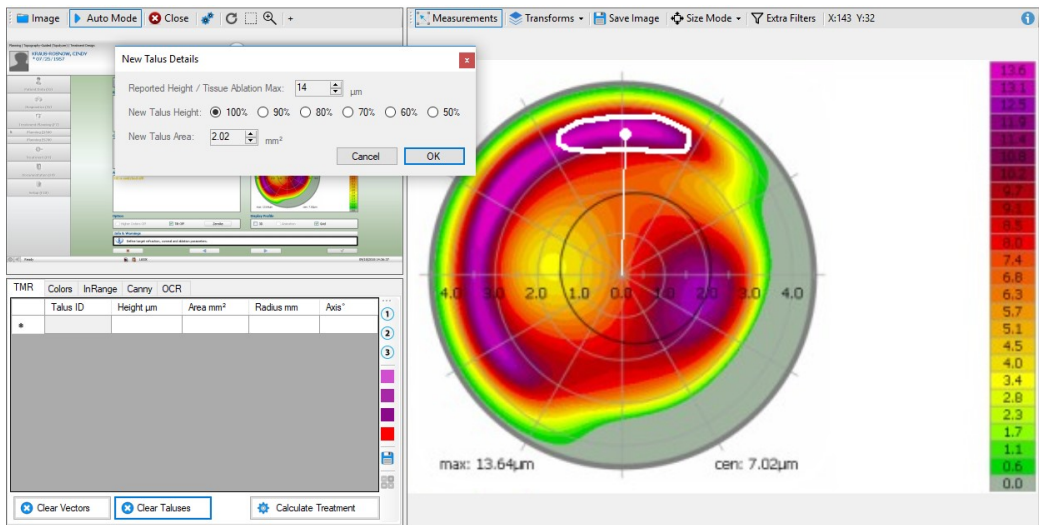
However in this patient, the talus in the upper left quadrant is much longer than a standard talus.



To manually select a talus yourself, click on the “Clear Talus” button in the lower left-hand corner. You will see that the lines around the taluses have been removed.



Now you can use your mouse and draw around each talus that you want to select. Once you select the talus you will be asked to give it a height. Look at the map to your right and select whether this is light purple (100%) or red/orange (50%) or somewhere in between. Then hit “OK” and move on to add another talus by again using the mouse to circle an area of interest.



Once all areas of significant talus have been selected you can hit “Calculate Treatment” on the bottom of the screen to obtain your final complete treatment analysis.

